

Year 5 Handwriting Activity for Week Beginning 15/06/20

As you have been working on the computer for many hours, we would like you to take some time to practise your handwriting. Write two lines of each of the words in the focus section.

Please complete ALL sections including the extension and ensure you form your letters correctly.

UNIT 7

Developing fluency.



London is a capital city.

FOCUS

Copy these words into your book.

ship ships house houses bridge bridges
dome domes boat boats theatre theatres
tower towers road roads temple temples



EXTRA

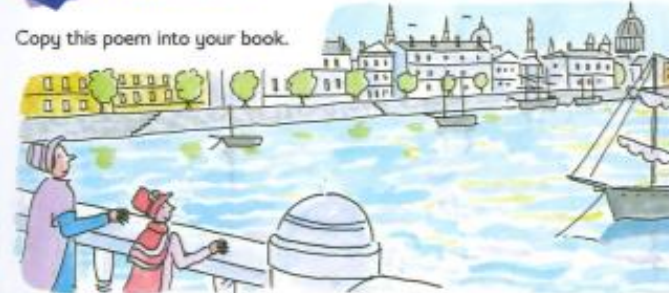
Choose the correct word to finish these sentences.
Copy the sentences into your book.

- 1 St Paul's Cathedral has a large **dome/domes**.
- 2 There are many **bridge/bridges** over the River Thames.
- 3 Big Ben rises above the **House/Houses** of Parliament.



EXTENSION

Copy this poem into your book.



Remember, sloping your letters slightly to the right and joining them will make your handwriting fluent.

This city now doth, like a garment, wear
The beauty of the morning; silent, bare,
Ships, towers, domes, theatres, and temples lie
Open unto the fields, and to the sky;
All bright and glittering in the smokeless air.

From 'Composed Upon Westminster Bridge' by William Wordsworth